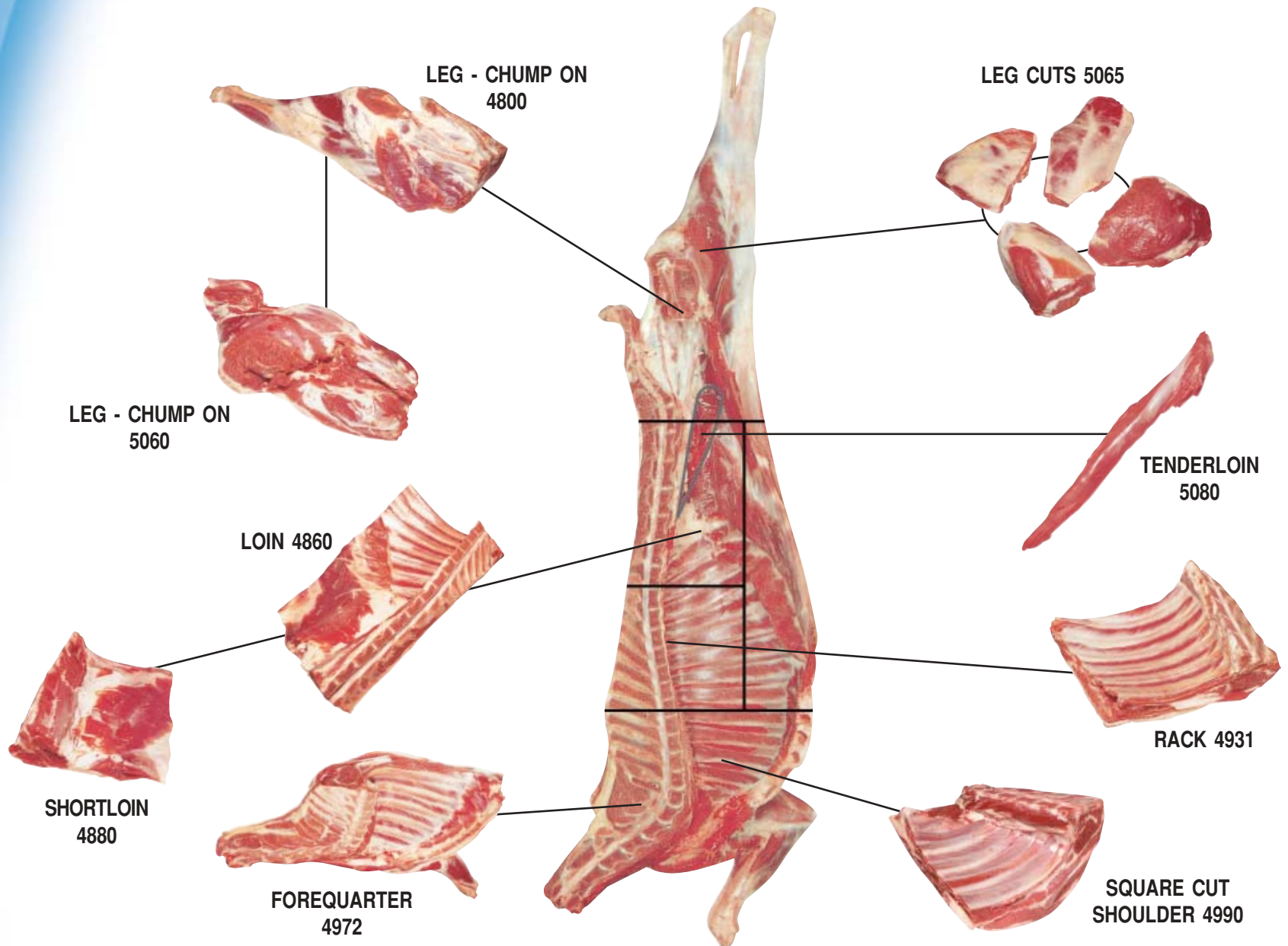


## Goat Primal Cuts



# Goat Carcass

H.A.M. Code: 4640

Goat Carcass includes all parts of the body skeletal musculature and bones.

**Specification Tips:**

- Kidneys - Kidney fat retained or removed.
- Specify carcass weight class or range.
- Specify fat class measurement.



**Note:** Goatmeat primal cuts and H.A.M. code numbers are the same reference as Lamb / Sheepmeat primal cuts and descriptions.



LEG - CHUMP ON - H.A.M. Code: 4800



LEG CUTS - H.A.M. Code: 5065



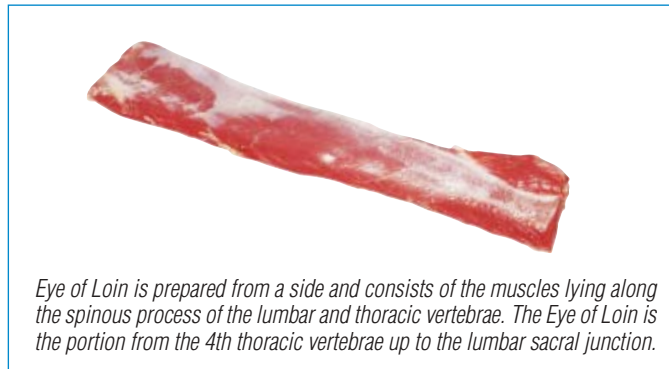
FOREQUARTER - H.A.M. Code: 4969



SHORTLOIN - H.A.M. Code: 4880



RACK - H.A.M. Code: 4931



EYE OF LOIN - H.A.M. Code : 5142

